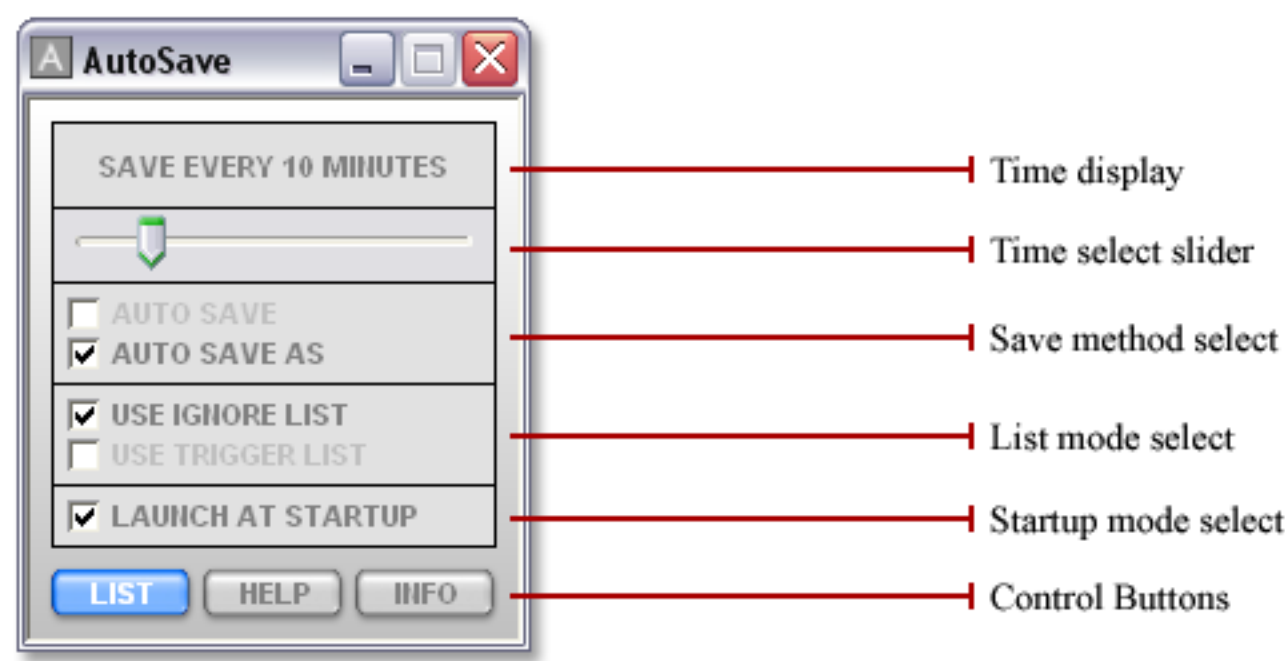


AutoSave 2.5

AutoSave was designed to be as user-friendly as possible without hindering its vital role in your software line-up. So this tutorial will only need to cover the basics of this utility.

To start off, let's familiarize you with the various control layouts:



Changing the time between saves:

To change the intervals (the amount of time before AutoSave saves your current document), simply slide the "Time select slider" to the left or right. As you do so, you will notice that the "Time display" changes accordingly. If you move the slider completely to the left, "AUTOSAVE OFF" is displayed. This means that although the program is still running, it will refrain from saving your documents. The slider will adjust the AutoSave intervals between 1 and 60 minutes (as well as the "off" state). These changes are instant and reset the time before the next AutoSave the moment you move the slider.

Saving methods:

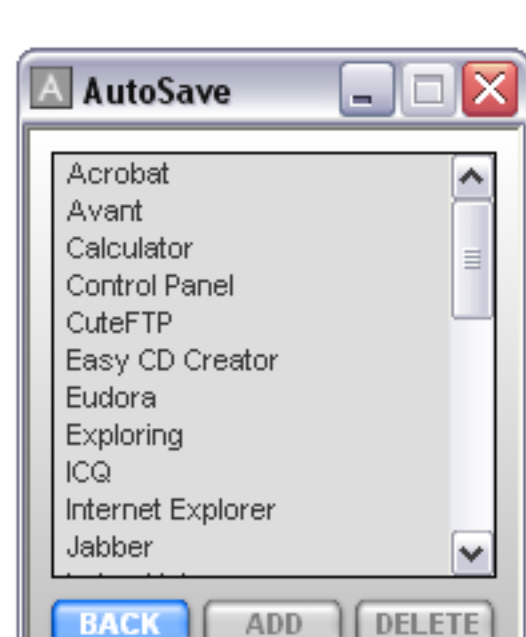
There are two methods of saving a document you are working on: "Save" and "Save As". Although seemingly similar, each has its own advantage and you may decide that one is better suited than the other for your needs. The "Save As" method (shown above in the "Save method select" area) prompts you to save your current document at intervals of your choice (as explained above). This is the best method for those who wish to assure a secure save of their documents, and allows you to save under different file names for more security. The "Auto Save" method (shown above in the "Save method select" area) automatically saves your work in the background so that you don't have to stop mid-stream and choose a save location. Although speedy, it does have some drawbacks. This function can be best summed up as: "Would you like a prompt, or would you like to just save to the last saved location?" Any changes made are instant and don't affect the time between save intervals.

The program list types:

One of the key features of AutoSave is the implementation of the "Ignore" and "Trigger" list options (shown above in the "List mode select" section). This option allows you to control how AutoSave thinks. It's sort of a glass half-full or glass half-empty approach to saving your document. By selecting "USE IGNORE LIST", AutoSave will save any current document as long as it's *not* on your "Ignore list" of programs. On the contrary, by selecting "USE TRIGGER LIST", AutoSave will save any current document *only* if it's on your "Trigger list" of programs. AutoSave was designed so that you can jump back and forth between methods and does so by maintaining two separate lists: one with the programs you *don't* wish to save (the Ignore list) and the other with the programs you *do* wish to save (the Trigger list). So a user who wants to AutoSave only text documents would use the Trigger list and set it to trigger only if their text editor was the active window. Whereas a user who wishes to save everything they work on *except* text documents would use the Ignore list and set it to ignore their text editor if it was the active window.

Adding or deleting a program from the list:

So how do you get it going? It's a little tricky, but once it's set up, you don't have to do it again. First off, select your list method of choice by clicking on either "USE IGNORE LIST" or "USE TRIGGER LIST" from the "List method select" area of AutoSave. Then click on the "LIST" button in the "Control buttons" area of AutoSave. This will take you to the following interface (the default Ignore list is shown, but the interface for the Trigger list is the same):



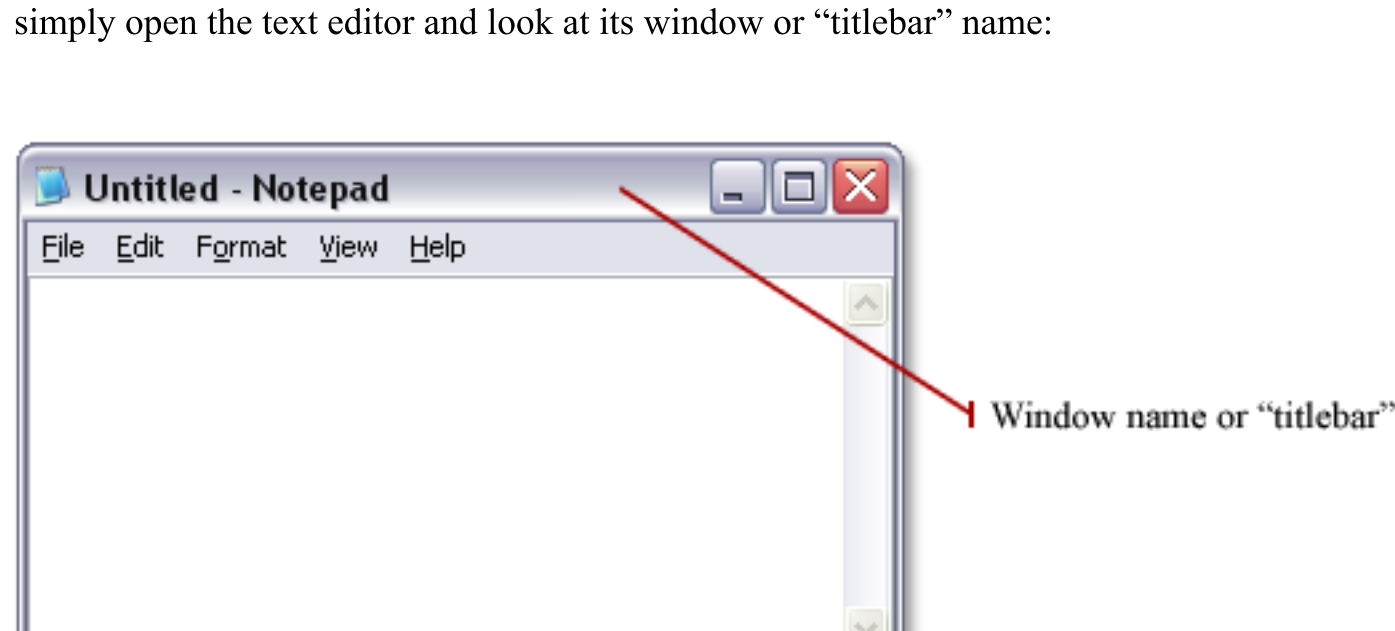
As you can see, there are three buttons at the bottom: "BACK", "ADD" and "DELETE". As you can imagine, the back button takes you back to the AutoSave interface, the add button allows you to add a program to the list and the delete button allows you to delete a program from the list. You can add a program to the list at any time, but in order to delete a program from the list, you must first select it by clicking on its name.

How AutoSave works is by obtaining the current active window's name and determining if it's a program who's document you might wish to save. The tricky part is selecting the key words that allow AutoSave to compare the current active window to your list.

Say, for example, you want AutoSave to save your current document unless the current document or (active window) is Internet Explorer. Although this is set up under the default Ignore list, you would open the program you want ignored (in this case Internet Explorer), and find as specific of words as possible that pertain to that program only.

For example, even though when you open Internet Explorer, the word "Explorer" is in the title, only putting "Explorer" would tell AutoSave to ignore any program with the word "Explorer" in it. So if you had a text editor called "Word Explorer", it would ignore it on each save interval. While this may seem tricky at first, it allows the maximum control over which programs you would like saved. As an example, if you were using the Trigger list, you could set it to AutoSave only documents with the word "Untitled" in its name.

So let's say we wanted to add your default text editor to your AutoSave list. You would simply open the text editor and look at its window or "titlebar" name:



Then you would find something in it's window name or "titlebar" that is unique only to that program. In this case "Notepad" would work. You would then click the add button on your list page and enter in "Untitled" exactly as it was displayed in the program's titlebar. If you were to have entered in "Untitled - Notepad" then it wouldn't trigger if you had a text document titled "MyFile.txt" which would show up as "MyFile - Notepad" when AutoSave performed its scan. Nor would it have worked if "notepad" was entered since "notepad" and "Notepad" are different in AutoSave's programming.

Remember, the list is case and context sensitive so when AutoSave looks at the name, if it doesn't find that *exact* name within the current program titlebar, it will skip over it.

The startup option:

Finally, the "LAUNCH AT STARTUP" option (shown above in the "Startup mode select" area) allows you to set AutoSave to automatically launch everytime you boot up your computer. This is especially usefull for those who are looking to automate the entire process.

To set it up, check the "LAUNCH AT STARTUP" box. You will then be prompted to continue. Click yes, then locate the "Autorun2.5" .exe file itself. This is the file that you downloaded upon purchase and the file used to run the program. It is likely in the "My Documents" folder and will have the orange EDL icon next to it.

Once you have located the "Autorun2.5" .exe file, click on it once and then click on the button labeled "Open". Your system will then be set up to launch AutoSave everytime your computer starts up.

Acknowledgements:

We here at Everyday Logic are proud of our programs and thank all of our users around the world who have continued to support us in our efforts to bring inexpensive, yet powerful programs to the market. We have a lot of new utilities in the lab and are anxious to share them with you. So check back on our website: www.EverydayLogic.com every now and then and be sure to tell your friends where they can purchase quality, inexpensive programs instantly!

THANK YOU!